

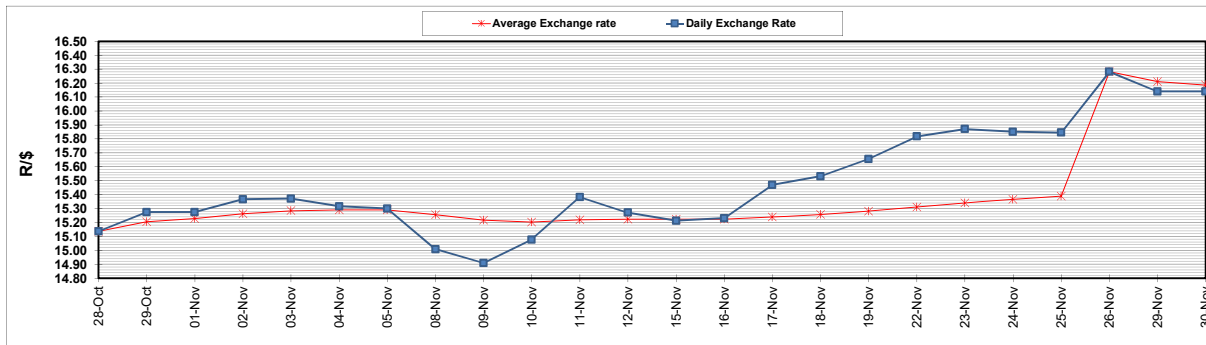
	PETROL 95 ULP	PETROL 93 ULP & LRP	DIESEL 0.05%	DIESEL 0.005%	ILL. PAR.
GAUTENG PUMP PRICE (SA c/l) AS FROM 01/12/2021	2,029.000	2,007.000	-	-	-
WHOLESALE PRICE (SA c/l) AS FROM 01/12/2021	-	-	1,792.480	1,797.880	1,167.688
SINGLE NATIONAL MAXIMUM RETAIL PRICE	-	-	-	-	1,489.000
BASIC FUEL PRICE - 30/11/2021 (SA c/l)	852.356	836.070	838.513	844.746	832.196
PRESS RELEASE CONTRIBUTION TO BFP 26/11/2021 - 30/11/2021 (SA c/l)	937.110	925.110	917.630	921.030	912.128
UNIT OVER/(UNDER) RECOVERY - 30/11/2021 (SA c/l)	84.754	89.040	79.117	76.284	79.932
AVERAGE BASIC FUEL PRICE 26/11/2021 - 30/11/2021	877.134	860.794	862.794	869.001	853.450
AVERAGE UNIT OVER/(UNDER) RECOVERY 26/11/2021 - 30/11/2021	59.976	64.315	54.836	52.029	58.678

ANALYSIS MOVEMENT OF AVERAGE OVER/(UNDER) RECOVERY

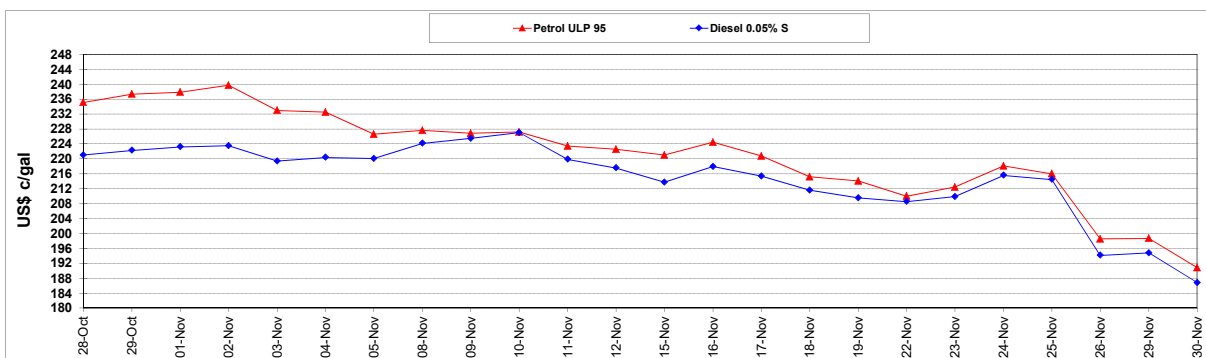
	PETROL 95	PETROL 93	DIESEL 0.05%	DIESEL 0.005%	ILL. PAR.
- MOVEMENT IN INTERNATIONAL PRODUCT PRICES	103.217	106.752	97.370	94.869	100.752
- MOVEMENT IN EXCHANGE RATE	(43.241)	(42.436)	(42.534)	(42.840)	(42.074)
AVERAGE UNIT OVER/(UNDER) RECOVERY 26/11/2021 - 30/11/2021	59.976	64.315	54.836	52.029	58.678

R/\$ EXCHANGE RATE - (R/\$16.1400 - 30/11/2021)

EXCHANGE RATE USED IN BASIC FUEL PRICE



INTERNATIONAL PRODUCT PRICES OF BASKET USED IN BASIC FUEL PRICE



BASIC FUEL PRICE IN SA CENTS PER LITRE

